

CABLE & CABLE ACCESSORIES

RUBBER CABLE

CAT 6 CABLE

CABLE GLANDS

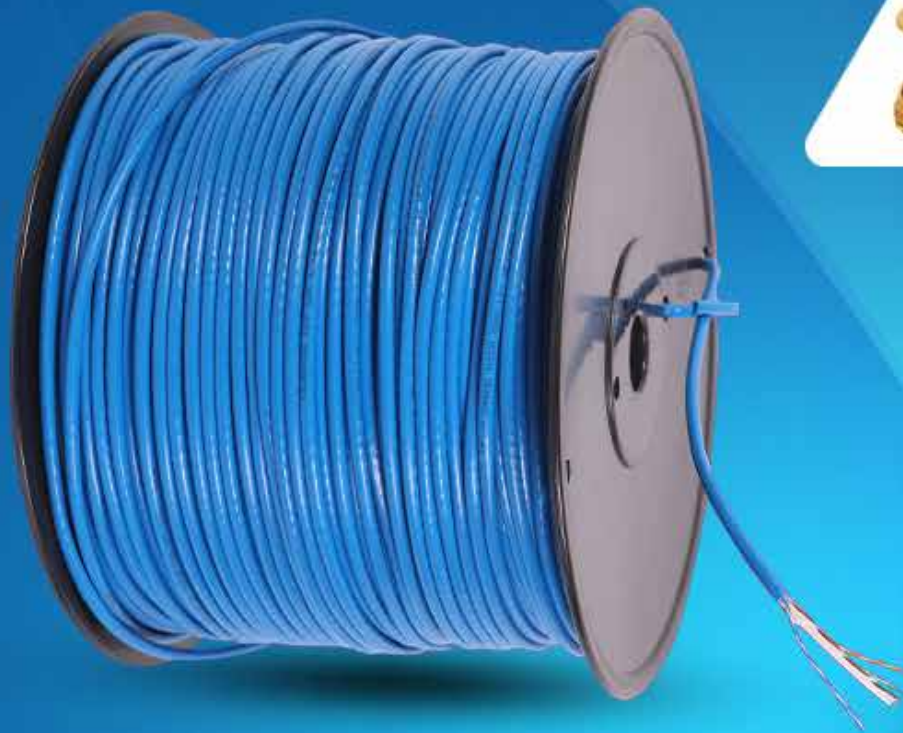
CABLE LUGS

EARTHROD & ACCESSORIES

BRASS ADAPTOR

CABLE PULLER

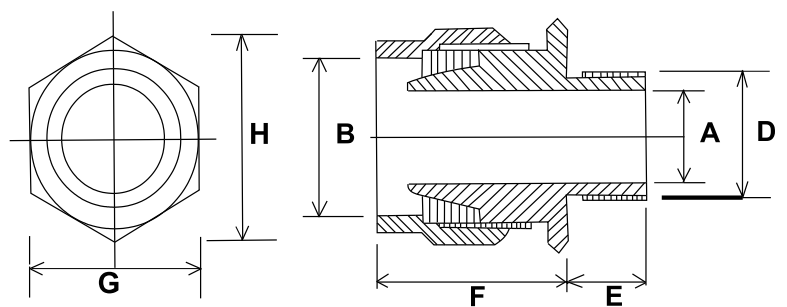
BENDING SPRING



CABLE GLANDS

BW BRASS CABLE GLANDS

- To BS 6121: Part 1.
- Suitable for single wire armoured, plastic or rubber sheathed cables.
- Application - for use in dry, indoor situations.
- Low cost two part design.
- Shroud may be used for additional ingress protection.
- IP 54.
- Finish : Natural Brass and also available in Electro Tinned and Nickel.
- Threads: Entry threads are metric to BS 3643 and are also available in Imperial (ET).
- Also available in Aluminium (BS 1474) cable glands.



STANDARD : B.S. 6121, Part-1 : 1989

APPLICATION : Indoor, for use with all type of SWA Cables

FUNCTION : Provides for Armour Clamp Only

MECHANICAL : Provides retention of Armour or Brand Impact Resistant

GLAND SIZE	ENTRY THREAD		CABLE ACCEPTANCE DETAIL			ACROSS FLAT	ACROSS CORNER
	DIA. C	LENGTH MINIMUM E	DIA. MAX. A	DIA. MAX. B	ARMOUR DIA. D		
20 S	20	10	12.00	16.00	0.9/1.25	21.00	23.40
20 L	20	10	15.00	20.00	0.9/1.25	24.00	26.80
25 L	25	10	20.00	26.00	1.25/1.60	31.70	35.00
32 L	32	10	26.30	32.50	1.60/2.00	39.80	45.00
40 L	40	12	32.30	40.00	1.60/2.00	49.50	56.00
50 L	50	13	44.00	53.20	2.00/2.50	60.50	68.50
63 L	63	13	55.00	66.00	2.50	76.00	85.80
75 L	75	16	67.00	78.00	2.50	89.50	100.00
90 L	90	18	79.00	90.00	2.50/3.15	104.30	117.00

CABLE GLANDS

CW BRASS GLANDS FOR SWA CABLE

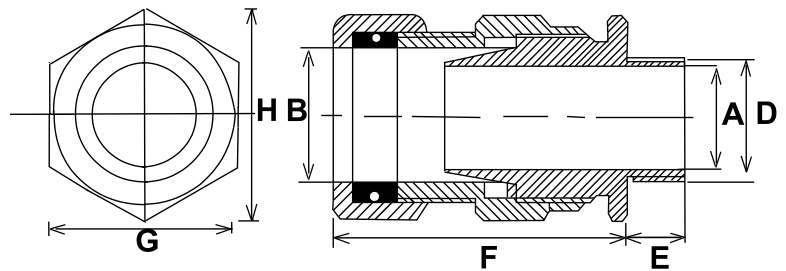
- To BS 6121: Part 1.
- Suitable for single wire armoured, plastic or rubber sheathed cables.
- Outer seal grips sheath of cable.
- For use in most climatic conditions weatherproof and waterproof.
- Seal rated to IP 66.
- Design has separate armour locking ring.
- Gland rated to IP 66 with use of suitable sealing washer or thread sealant at gland interface.
- Finish : Natural Brass and also available in Electro Tinned and Nickel.



CW FLAME PROOF GLAND FOR SWA CABLE

as above but with these additional benefits:

- For use in hazardous environments
- Complies with BS 5501 Pt1 & Pt 6
- CW for flame proof increased safety application
- Threads: Entry threads are metric to BS 3643 and are also available in Imperial(ET)
- Also available in Aluminium (BS 1474) cable glands

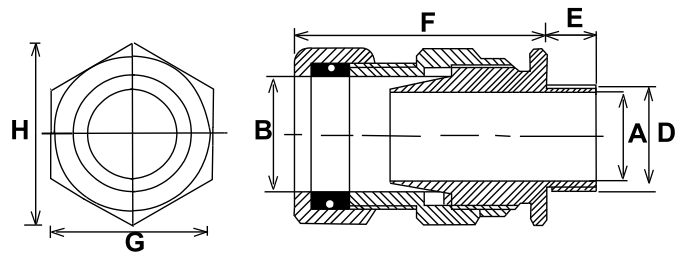


GLAND SIZE	ENTRY THREAD		CABLE ACCEPTANCE DETAIL			ACROSS FLAT	ACROSS CORNER
	DIA. C	LENGTH MINIMUM E	DIA. MAX. A	DIA. MAX. B	ARMOUR DIA. D		
20 S	20	9	11.60	16.00	0.9/1.25	21.50	24.50
20 L	20	9	14.00	20.00	0.9/1.25	24.20	27.30
25 S	25	9	19.00	24.00	1.25/1.60	30.00	33.60
25 L	25	10	20.00	27.00	1.25/1.60	30.00	34.40
32 S	32	10	24.00	30.50	1.60/2.00	36.50	40.00
32 L	32	10	26.20	33.00	1.60/2.00	36.50	42.30
40 S	40	11	30.00	37.00	1.60/2.00	44.50	50.00
40 L	40	11	32.50	41.00	1.60/2.00	46.50	52.00
50 S	50	13	40.00	47.50	2.00/2.50	55.00	62.00
50 L	50	13	44.00	52.60	2.00/2.50	59.00	66.00
63 S	63	14	51.00	60.00	2.50	69.00	76.00
63 L	63	14	55.00	66.00	2.50	73.00	82.00
75 S	75	15	62.00	72.00	2.50	83.00	94.00
75 L	75	15	67.00	78.00	2.50	86.30	98.00
90 L	90	19	79.00	90.00	2.50/3.15	105.00	118.00

CABLE GLANDS

E1W GLAND FOR SWA CABLE

- Suitable for single wire armoured, plastic or rubber sheathed, extruded bedded cables
- Outer seal grips sheath of cable
- Inner seal grips bedding layer of cable
- For use in most climatic conditions weatherproof and waterproof
- Inner and outer seal rated to IP 66
- Design has separate armour locking ring
- Gland rated to IP66 with use of suitable washer or thread sealant at gland interface
- Finish : Natural Brass and also available in Electro Tinned and Nickel



E1W FLAME PROOF GLAND FOR SWA CABLE

- For use in hazardous environments
- Complies with BS5501 Pt1 & Pt 6
- E 1 W increased safety application
- Threads: Entry threads are metric to BS3643 and are also available in Imperial (ET)
- Also available in Aluminium (BS 1474) cable glands

A1 A2 CABLE GLANDS



CABLE GLAND KIT CONTAINS :

- Gland
- Lock Nut
- Shroud
- Earth Tag

Kit contains two sets of above items up to 32mm sizes & one set from 40mm and above sizes

A1 A2 Type brass indoor cable gland is used with all types of unarmoured cable, providing mechanical cable retention. sealing is provided on the cable outer sheath.

A1 A2 range of industrial cable gland is designed and tested as per BS 6121:Part 1:1989. It meets the requirements of EN 50262 : 1999.

TECHNICAL INFORMATION

Type	: A2
Design Specification	: BS 6121: Part 1: 1989.
Ingress Protection Rating	: IP66
Standard Gland Material	: Brass
Optional Gland Material	: Nickel Plated Brass
Cable Type	: Unarmoured
Sealing Area(s)	: Cable Outer Sheath
Available Accessories	: Steel/Brass Locknut, PVC/LSF Shroud Brass Earth Tag, Nylon Washer, Brass Reducer

