





- LAMP & BULBS
- SPOT LIGHT
- WEATHERPROOF FITTINGS
- PANEL LIGHT
- LED DOWNLIGHT
- FLOOD LIGHT

LAMPS & LIGHTINGS

LAMPS & LIGHTINGS

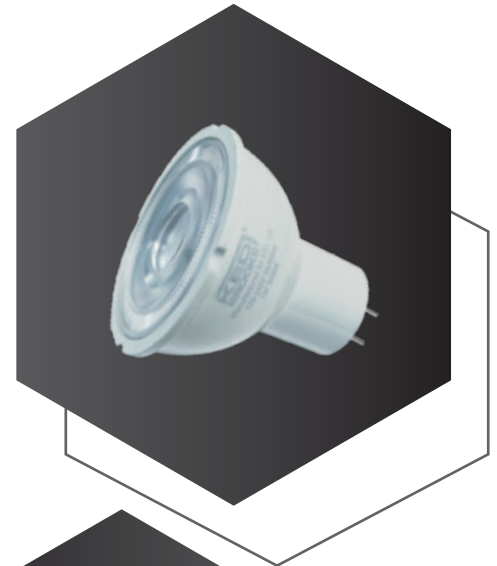
LED LAMPS

LED LAMP MR16-GU5.3 & GU10

MR16 and GU10 lamps are both popular types of spotlights commonly used in residential, commercial, and retail lighting applications. MR16 lamps typically feature a multifaceted reflector that directs light into a focused beam, making them ideal for spotlighting or highlighting specific areas.

| | |
|-----------|---------------|
| Voltage | : 220-240V |
| CRI | : >80 |
| Lamp Base | : E27, B22 |
| Life Span | : 20000 Hours |

| Model No | Wattage | Luminous Flux | Colour Temp | Base |
|-----------------|---------|---------------|-------------|-------|
| KBGU10-7-3000K | 7W | 810 Lm | 3000K | GU10 |
| KBGU5.3-7-3000K | 7W | 810 Lm | 3000K | GU5.3 |



LED SPOT LIGHT

Adjustable LED Spot light made of high quality plastic with aluminum reflector and PC cover, IP20.

| | |
|------------|--------------|
| Voltage | : 220-240V |
| Life Span | : 20,000 Hrs |
| Lumen/W | : 90Lm/W |
| Adjustable | : up to 45° |

Low flicker, available in
7W and 10W, Colour Temp: 3000K, 4000K, 6500K

| Model No | Wattage | Luminous Flux | Colour Temp | LIFE TIME |
|-----------------|---------|---------------|-------------|-----------|
| KBSPOT-7W-3000K | 7W | 630 Lm | 3000K | 20,000Hrs |
| KBSPOT-7W-6500K | 7W | 630 Lm | 6500K | 20,000Hrs |

LAMPS & LIGHTINGS

LED LAMPS

LED LAMPS E27 & B22

LED bulbs are compatible with existing fixtures with a E27 holder and are designed for retrofit replacement of incandescent, halogen and energy saving bulbs. They deliver huge energy savings and minimize maintenance costs.

Suitable for domestic applications.

Voltage : 220-240V
 CRI : >80
 Lamp Base : E27, B22
 Life Span : 20000 Hours

| Model No | Wattage | Luminous Flux | Colour Temp | Base |
|--------------------|---------|---------------|-------------|------|
| KBA60-9W-3000K | 9W | 810 Lm | 3000K | E27 |
| KBA60-9W-6500K | 9W | 810 Lm | 6500K | E27 |
| KBA60-12W-6500K | 12W | 1080 Lm | 6500K | E27 |
| KBA60-12WB22-6500K | 12W | 1080 Lm | 6500K | B22 |
| KBA70-15W-6500K | 15W | 1350 Lm | 6500K | E27 |



LED HIGH POWER LAMP

| Model No | Wattage | Luminous Flux | Colour Temp | Life Time |
|------------------|---------|---------------|-------------|-----------|
| KBT80-20W-6500K | 20W | 1800 Lm | 6500K | 20000Hrs |
| KBT100-30W-6500K | 30W | 2700 Lm | 6500K | 20000Hrs |
| KBT120-40W-6500K | 40W | 3600 Lm | 6500K | 20000Hrs |
| KBT140-50W-6500K | 50W | 4500 Lm | 6500K | 20000Hrs |



LED TUBULAR & CANDLE LAMP

| Model No | Wattage | Luminous Flux | Colour Temp | Life Time |
|-------------------|---------|---------------|-------------|-----------|
| KBT37-9W-6500K | 9W | 810 | 6500K | 20000Hrs |
| KBT45-12W-6500K | 12W | 1080 | 6500K | 20000Hrs |
| KBC37-E14-6-3000K | 6W | 540 | 3000K | 20000Hrs |
| KBC37-E14-6-6500K | 6W | 540 | 6500K | 20000Hrs |



LED PANEL LIGHT

DOWN LIGHT & CEILING LIGHT



RECESSED & SURFACE

LED Slim panel light made of die-cast aluminium body with PC diffuser

- Voltage : 85-265V ~ 50/60Hz
- CRI : > 80
- Beam Angle : 120°
- Operating Temperature : -20 °C to +40 °C
- Body Material : Aluminium
- IP Rating : IP20
- Life Time : 30,000 Hrs
- Mounting : Recessed/Surface

| Model No | Power | Luminous Flux | Product Size(mm) | Hole Cutting Size (mm) |
|---------------|-------|---------------|------------------|------------------------|
| KB-RPL4W-65K | 4W | 400 Lm | Ø85 | Ø75 |
| KB-RPL15W-65K | 15W | 1500 Lm | Ø193 | Ø175 |
| KB-RPL24W-65K | 24W | 2400 Lm | Ø225 | Ø205 |
| KB-RPL30W-65K | 30W | 3000 Lm | Ø300 | Ø285 |



LED PANEL LIGHT & DOWNLIGHTS



LED DOWNLIGHT-COB

LED COB downlight made of die -cast aluminum body with glass diffuser.

Voltage : 220-240V
 Life Span : 25,000 Hrs
 CRI : >80
 Rating : IP20



| Model No | Wattage | Beam Angle | Luminous Flux | Colour Temp | Dimenstions (L x H) |
|-----------------|---------|------------|---------------|-------------|---------------------|
| KB-DL30WCOB-65K | 30W | 120° | 100 Lm | 6500K | 225 x 55mm |
| KB-DL30WCOB-ECO | 30W | 120° | 90 Lm | 6500K | 225 x 55mm |

LED PANEL LIGHT-60x60

Ultra thin design, 70% energy saving
 Luminous efficiency 100lm/W
 Good glare reduction UGR<19
 Made of high quality aluminum frame with PMMA diffuser (No yellowing), Low flicker.
 External driver for extended flexibility and easy installation.

Areas of Application

Offices, Conference rooms, Reception areas, Corridors Etc.



| Model No | Wattage | Luminous Flux | Colour Temp | CRI | Life Span |
|-----------------|---------|---------------|-------------|-----|------------|
| KB-QS-BPL-50W | 50W | 5000 Lm | 6500K | >80 | 30,000 Hrs |
| KB-QS-BPL-50W4K | 50W | 5000 Lm | 4000K | >80 | 30,000 Hrs |

LED WEATHERPROOF

FITTING-IP65

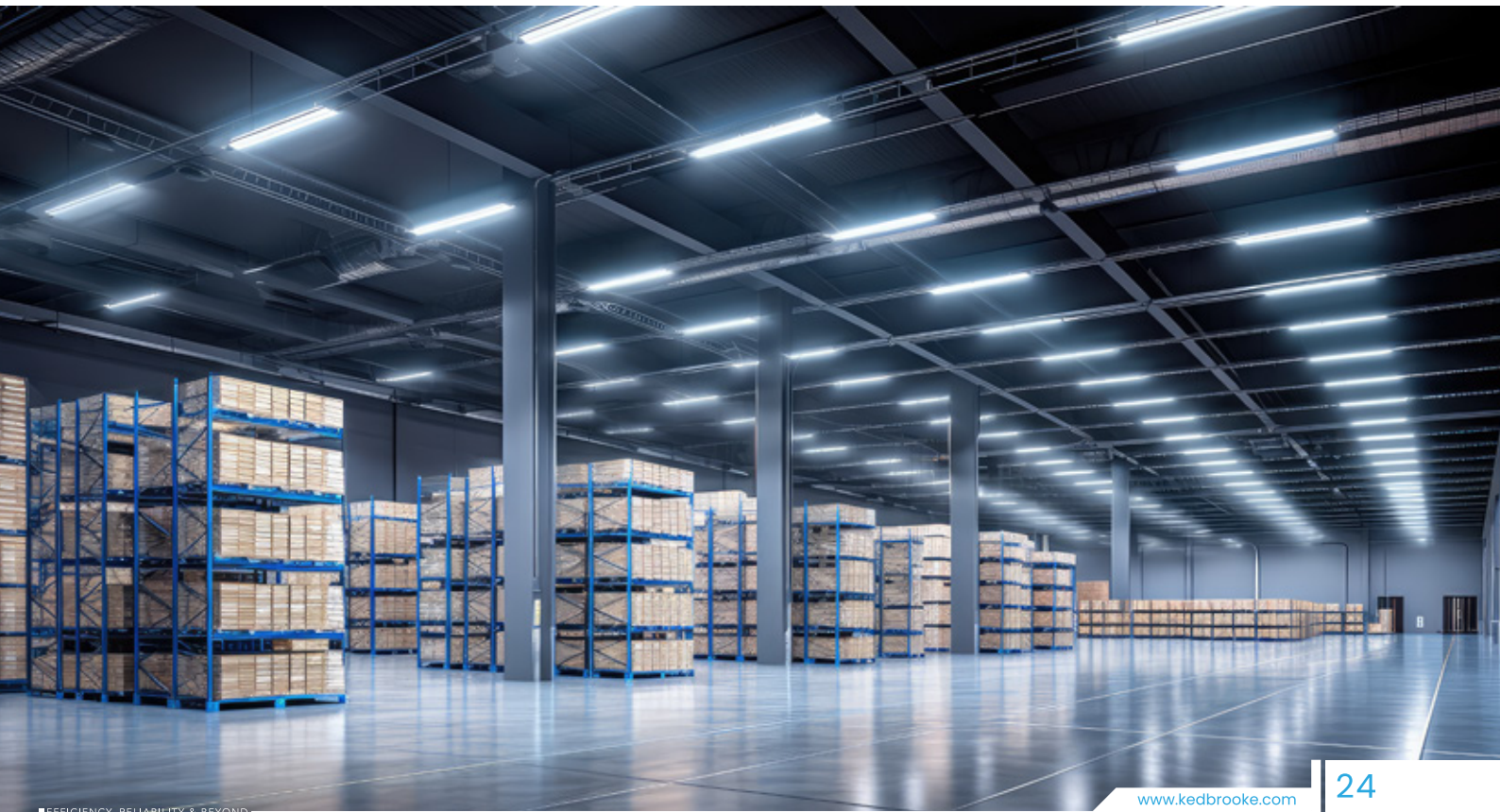


LED WEATHERPROOF FITTINGS WITH ABS + PC COVER + METAL/PVC CLIPS

Voltage : AC 220~240
 CRI : > 80
 Operating Temperature : -20 °C to +40 °C
 Body Material : Poly Carbonate
 IP Rating : IP65
 Life Time : 50,000Hrs
 Mounting : Surface



| Model No | Wattage | Luminous Flux | Product Size(mm) |
|--------------|---------|---------------|------------------|
| KBMWP110-LED | 1x10W | 1000 Lm | 650X80X86 |
| KBMWP210-LED | 2x10W | 2000 Lm | 650X120X85 |
| KBMWP120-LED | 1x20W | 2000 Lm | 1265X80X86 |
| KBMWP220-LED | 2x20W | 4000 Lm | 1265x 120x85 |
| KBPWP110-LED | 1x10W | 1000 Lm | 650X80X86 |
| KBPWP210-LED | 2x10W | 2000 Lm | 650X120X85 |
| KBPWP120-LED | 1x20W | 2000 Lm | 1265X80X86 |
| KBPWP220-LED | 2x20W | 4000 Lm | 1265x 120x85 |



LED FLOOD LIGHT



- High efficient LED flood light suitable for outdoor and indoor area lighting.
- Body made of die-cast aluminum with toughened glass.
- With high quality SMD chips. Save up 80% energy & have better lighting characteristics than traditional metal halide heat.



Housing Colours :
Grey & White

FEATURES

Slim & Compact design, Instant start, No flickering
High strength and impact resistance

- Life span : 30,000 Hrs
 Rating : IP65
 Voltage : 185-265V 50/60Hz
 Working temp : -20° TO 50°

| Model No | Power | Efficacy | Colour Temp | CRI | Beam Angle (Hrs) | Measurement (L x W x H) | Life Time Materials |
|------------|-------|----------|-------------|-------|------------------|-------------------------|---------------------|
| KBIK03-30 | 30W | 100LM/W | 6500K | Ra>80 | 90° | 160x120x26(MM) | 30,000 |
| KBIK03-50 | 50W | 100LM/W | 6500K | Ra>80 | 90° | 207x160x26(MM) | 30,000 |
| KBIK03-100 | 100W | 100LM/W | 6500K | Ra>80 | 90° | 271x206x26(MM) | 30,000 |
| KBIK03-150 | 150W | 100LM/W | 6500K | Ra>80 | 90° | 382x249x27(MM) | 30,000 |
| KBIK03-200 | 200W | 100LM/W | 6500K | Ra>80 | 90° | 380x280x28(MM) | 30,000 |

